

PLATINUM

By



QUALITY THAT BUILDS TRUST

Exclusive residential
Apartments with
cutting edge architecture, and
modern amenities

PRM/KA/RERA/1273/318/PR/170125/007392

PLATINUM

By

INTECH
DEVELOPERS
QUALITY THAT BUILDS TRUST



Platinum
by



PLATINUM BY INTECH DEVELOPERS

Inspired by the beauty of nature and situated in Udupi's prime development area, Platinum seamlessly blends tropical and modern architecture. This unique design offers natural lighting, complete privacy, and adherence to Vastu principles, ensuring a harmonious living experience.

Our commitment to sustained luxury and environmental enrichment is reflected in every aspect of Platinum. The architecture is crafted to maximize your living experience while maintaining a balance with nature.



EV CHARGING STATION



Convenient on-site charging for electric vehicles, supporting sustainable living.



PLATINUM

INTECH DEVELOPERS



MODERN GYMNASIUM



A fully equipped fitness center with the latest equipment for diverse workout needs.

ROOF TOP SWIMMING POOL



A luxurious pool with panoramic views, perfect for relaxation and leisure.



INDOOR GAMES



A variety of recreational options for all ages, encouraging community interaction.



ROOF TOP PARTY LOUNGE



An elegant space for hosting gatherings and special events with stunning views.



LIBRARY

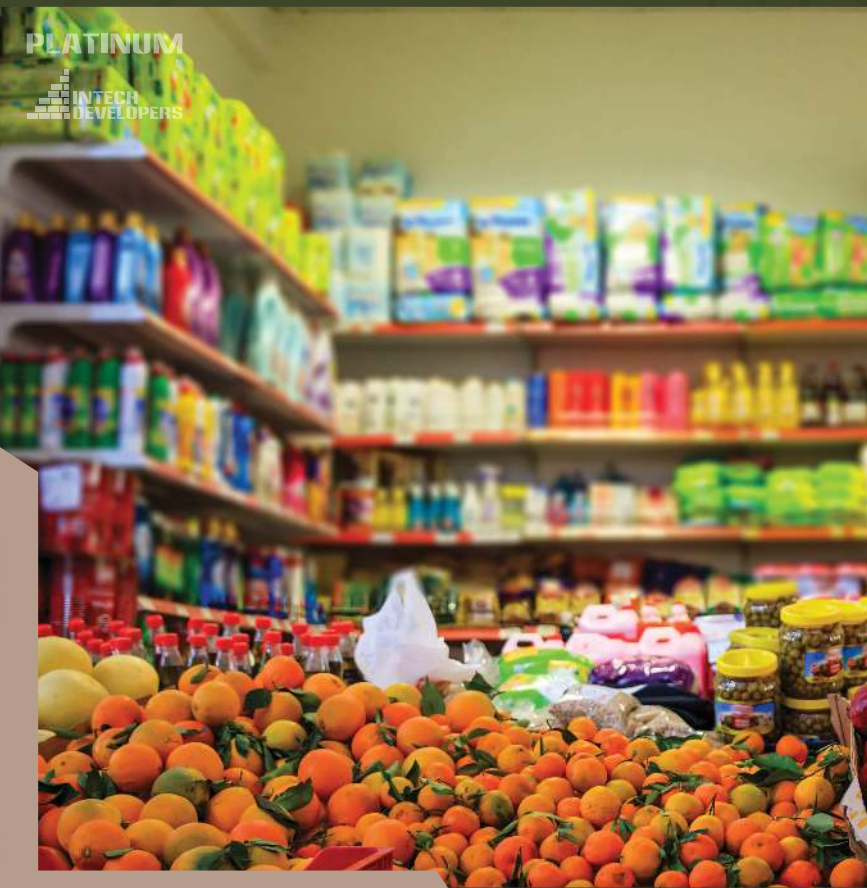


A serene and well-stocked space for reading and study, offering a quiet retreat with a diverse collection of books and resources.



PLATINUM

INTECH
DEVELOPERS



SUPER MARKET



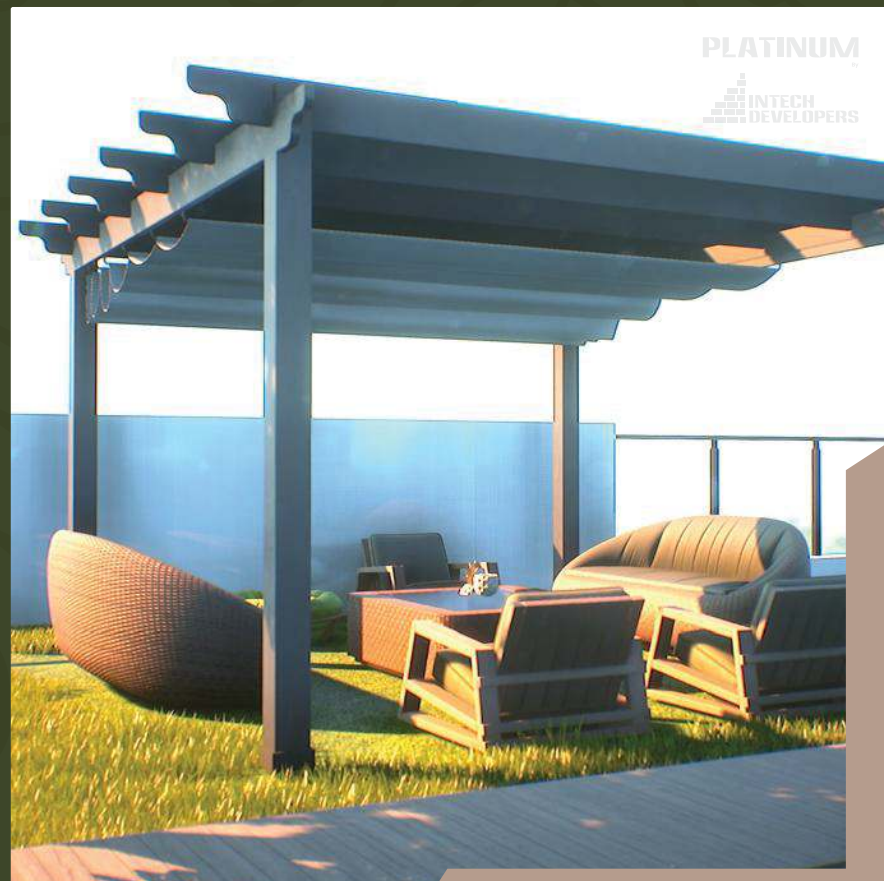
A convenient on-site store for daily essentials, ensuring ease of access.

Residents only

OPEN AIR WORKSTATIONS



Refreshing outdoor workspaces designed for remote work, blending productivity with nature.



PLATINUM

INTECH
DEVELOPERS

PLATINUM

INTECH DEVELOPERS



2 BHK UNIT

2 BHK APARTMENT
 TYPE : B2
 SALE AREA : 1266.09 SFT

*4 BHK can be converted by merging 2 BHK

NOTE :
 Known as Type B
 in First floor, due to
 1 m. wide balconies with
 SALE AREA : 1190.36 SFT

PLATINUM



2 BHK UNIT

2 BHK APARTMENT

TYPE : B3

SALE AREA : 1299.64 SFT

*4 BHK can be converted by merging 2 BHK

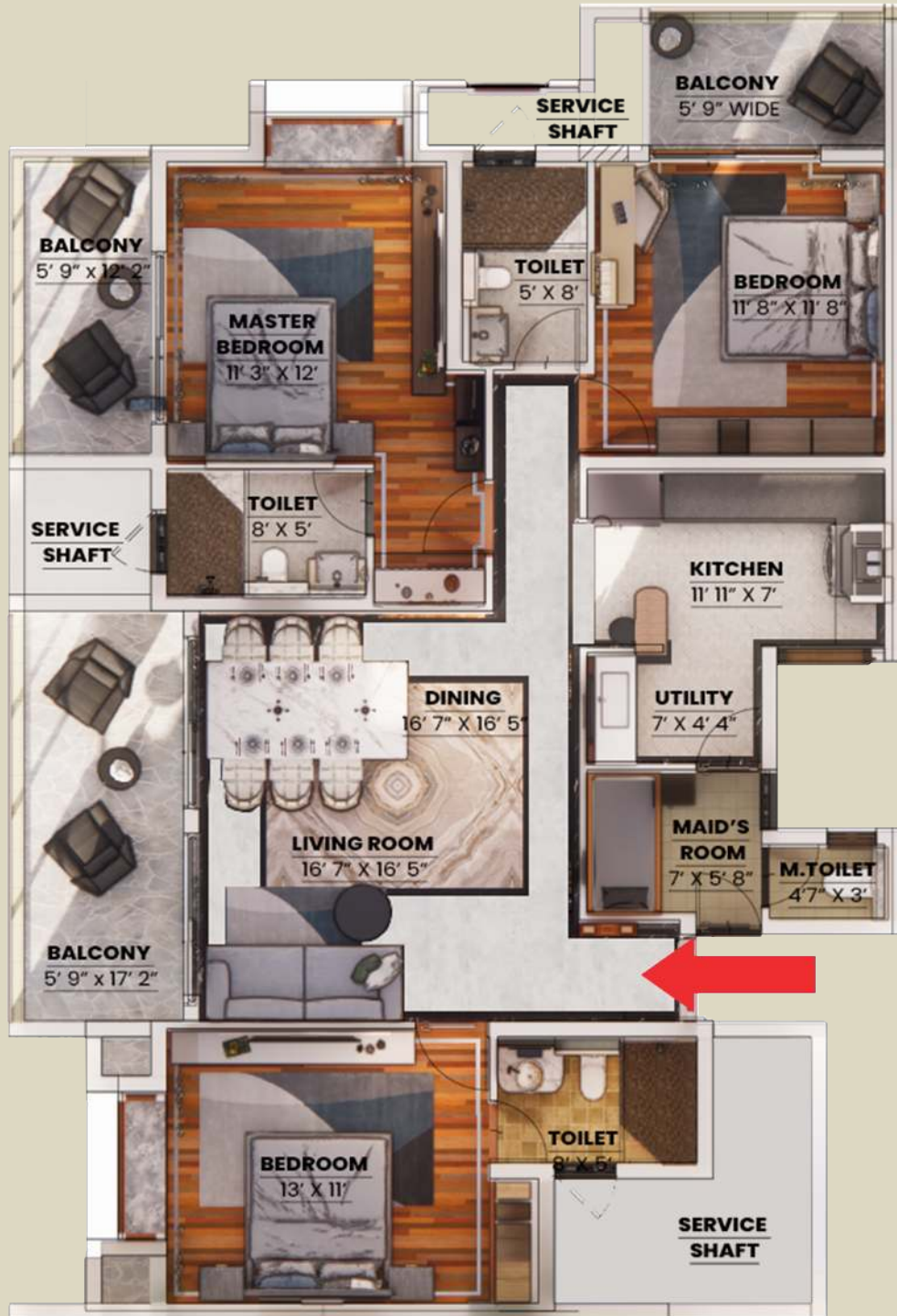


2 BHK UNIT

2 BHK APARTMENT
TYPE : C1
SALE AREA : 1240.15 SFT

*4 BHK can be converted by merging 2 BHK

NOTE :
Known as Type C
in First floor, due to
1 m. wide balconies with
SALE AREA : 1168.72 SFT



3 BHK UNIT

3 BHK APARTMENT
TYPE : A1
SALE AREA : 1940.78 SFT

NOTE :
Known as Type A
in First floor, due to
1 m. wide balconies with
SALE AREA : 1808.50 SFT



3 BHK UNIT

3 BHK APARTMENT
TYPE : A2
SALE AREA : 1960.19 SFT

LIFTS



Passenger and service lifts in all blocks, appropriately sized and capacitated



FLOORING



Vitrified tiles in the foyer, living room, dining room, family area, and corridors.

High-quality vitrified tiles in toilets.

Ceramic or vitrified tiles in balconies.

Vitrified tiles in the kitchen.





KITCHEN



Kitchen and utility areas equipped with counter, dado tiling and sink.

Provision for an exhaust fan.

Plumbing points and interior templates provided.

BATHROOMS



Marble counters with wash basin and EWC.

Glass partitions in all toilets and High-quality chrome - plated fittings from well-reputed brands (additional cost).

Provision for geysers in all toilets.

Suspended pipelines concealed within a false ceiling.

Provision for an exhaust fan.



HOME OFFICE / STUDY ROOM & TOILET



Vitrified tile flooring and ceramic tile dado in the home office/study room and toilet.



PLATINUM
INTECH
DEVELOPERS

PLATINUM
INTECH
DEVELOPERS



PAINTING



Cement / textured paint for external walls.

Emulsion paint for internal walls.

OBD for ceilings.

MS railings with enamel paint for all internal staircases.

Glass railings for all balconies.



LOBBY



Ground floor lobby flooring and lift cladding in marble or granite.

Typical floor lobby featuring a mix of tiles and marble/granite.

Service lobby, staircase, and corridors finished with High Quality vitrified Tiles and textured wall paint.

INTERNAL DOORS



8 ft high entrance doors with wooden frames.

7 ft high internal doors with wooden frames.

Windows with UPVC or anodized aluminium frames, clear glass, and provision for mosquito mesh shutters.



ELECTRICAL



Concealed PVC-insulated copper wiring with modular switches.

Power outlets and light points provided.

TV and telephone points in the living room, kitchen, and all bedrooms.

ELCB and individual meters provided for all apartments.



PLATINUM
INTECH
DEVELOPERS



PARKING



Cover Parking :
Sheltered parking spaces designed to protect vehicles from weather elements, ensuring durability and convenience.

Visitor Parking :
Offers dedicated, conveniently located spaces near entrances, ensuring easy access for guests.



SECURITY SYSTEM



Security cabins with CCTV coverage at all entry/exits in lifts, and corridors.

DG POWER



Generator backup will be provided.



AV Baliga Hospital	200 m
KMC Hospital	4 Km
DMART [Hyper Market]	2.6 Km
POODAR International School	1.5 Km
SHARADHA Residencial School	1.5 Km
UDUPI - AMBAGILU Highway	1.5 Km
MANIPAL - AMBAGILU Highway	1.5 Km
Manipal Institute of Higher Education	3.7 Km
MANDOVI Times Square Mall	2.2 Km
Malpe Beach	9 Km
Shri Venkataramana Temple	900 m
Rehamaniya Jumma Mosque	1 Km
Our Lady of Fatima Catholic Church	1.5 Km

SITE OF CONSTRUCTION

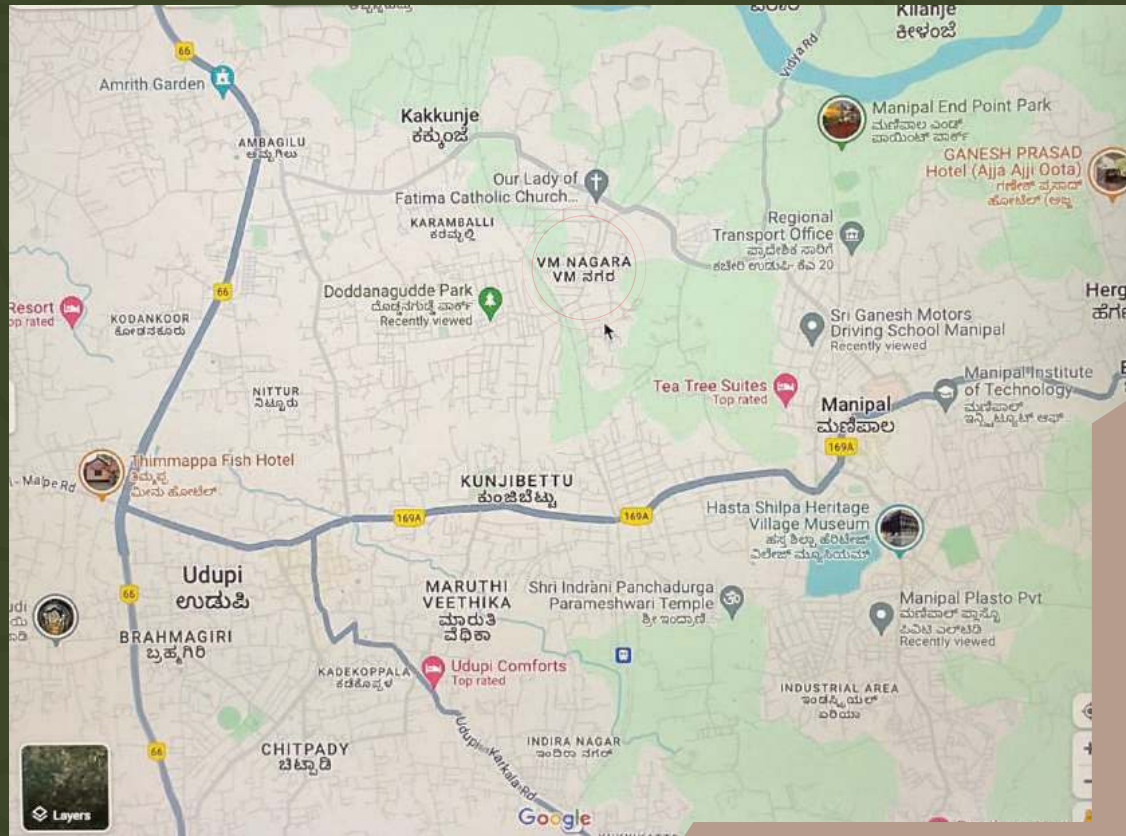


*Distance are noted from the site of construction

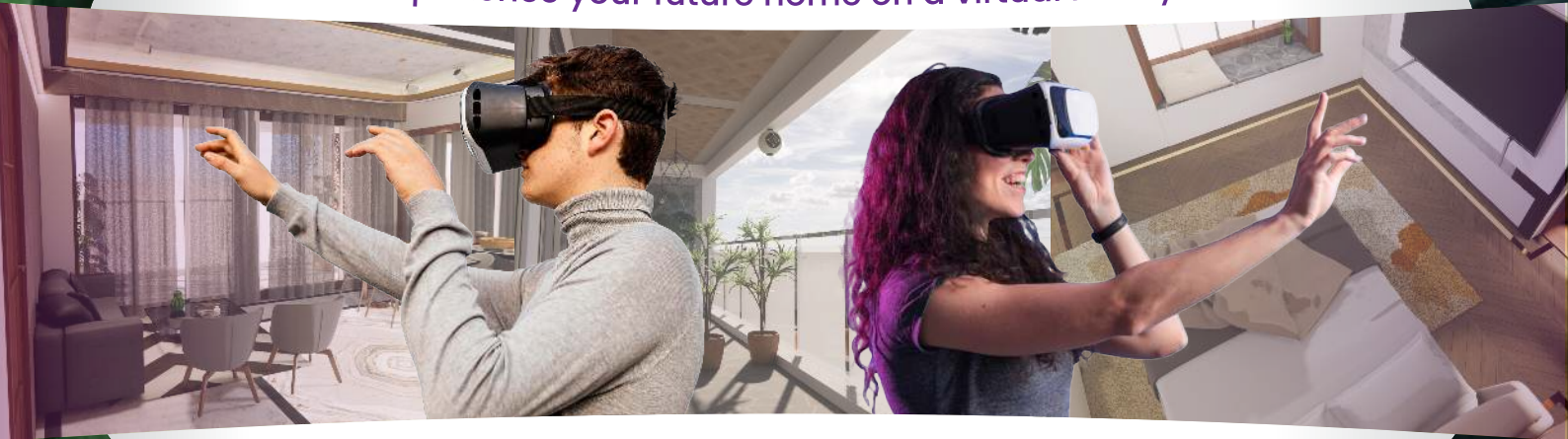
LOCATION



Site of Construction



Experience your future home on a virtual reality.



Scan for brochure & walkthrough

PLATINUM

By

**INTECH
DEVELOPERS**
QUALITY THAT BUILDS TRUST

+91 948 351 1919 / 831 044 7339

aamirshamim@intechdevelopers.in

Intech Developers 4th VM Nagar , Post – Kunjibettu Udipi – 576102
Landmark : AV Baliga Hospital